

 **STORMTECH[®]**

Spring 2026 New Arrivals

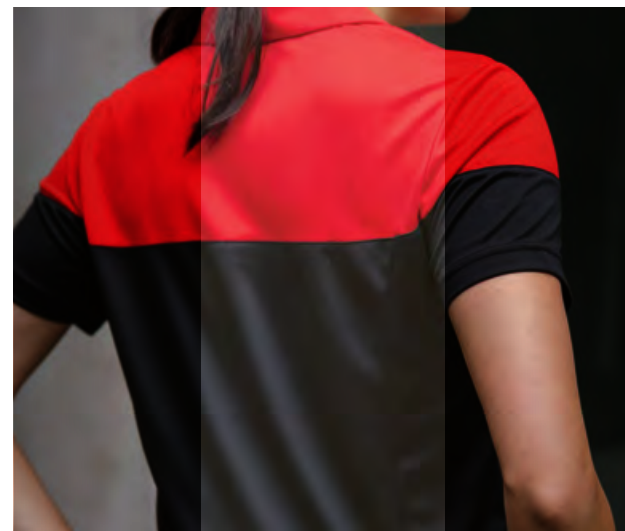
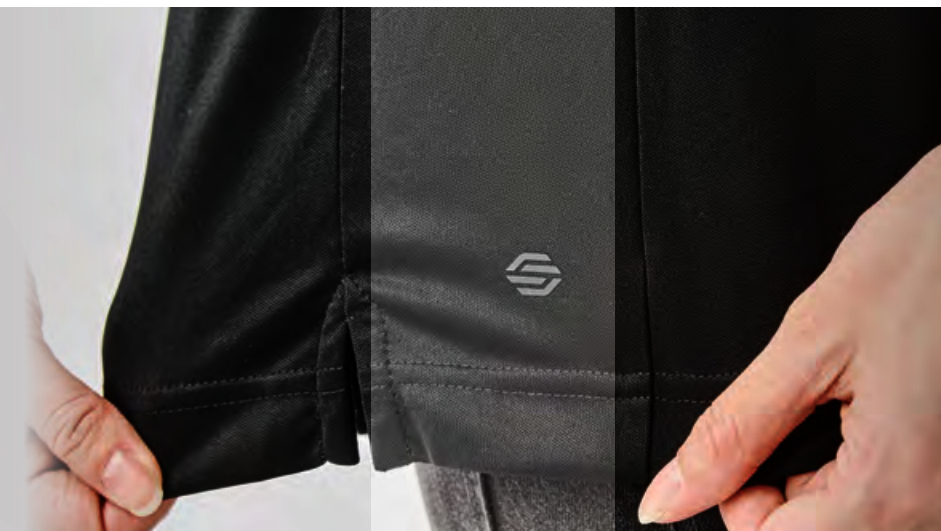




Monterey Two-Tone S/S Polo

PSX-9M | PSX-9W

Designed for performance and visual impact, this technical polo features H2X-DRY® Moisture Management to keep you dry and comfortable all day long. Crafted with mechanical stretch for unrestricted movement and snag resistant fabric for lasting durability, it's built to perform under pressure. Its bold 2-tone design—highlighted across the upper chest and shoulders—delivers a sharp visual statement that stands out from the crowd.



Monterey Two-Tone S/S Polo

PSX-9M | PSX-9W

MSRP **\$36.00** (A)



Anti-Curl Collar with Collar Stays (M's)
Helps maintain collar shape and structure, even after washing

Classic 3-Button Placket
Classic polo styling that is easy to wear and easy to style

STORMTECH H2X-DRY® Moisture Management
Allows perspiration to escape from the body, helping to maintain optimal body temperature and comfort

Mechanical Stretch
Provides added comfort, flexibility and shape retention

Hem Side Slits
Adds fashion detail, comfort and ease of movement at hem

Anti-Curl Combination Collar with Collar Stays (W's)
Helps maintain collar shape and structure, even after washing

Contoured Seaming (W's)
Provides a closer to body fit and sleek silhouette

Snag Resistant Fabric
Improves the snag resistance of the fabric and leaves the garment looking new, wear after wear

UPF Rating 40+
Protects the skin from the sun's rays



ANTI-SNAG

Fabrication 100% Polyester Double Pique

Weight Lightweight - 4.28 oz/yd² / 145gsm

Men's Sizes S-3XL (Granite/Black S-5XL)

Women's Sizes XS-2XL (Granite/Black XS-3XL)

Technical Features



Decoration Options



M's & W's: Granite/Black



M's & W's: Royal Blue/Black



M's & W's: Red/Black

Monterey S/S Polo

PSX-8M | PSX-8W

The Monterey S/S Polo combines simplicity with performance in a lightweight, functional design. Crafted from mechanical stretch and snag-resistant fabric, it ensures comfort and flexibility for everyday wear. The anti-curl collar with collar stays maintains a sharp, polished look, while the UPF 40+ rating offers sun protection when you're out and about. For a casual, yet refined style, this polo is a practical choice for daily wear, offering quality with and long-lasting durability.



Monterey S/S Polo

PSX-8M | PSX-8W

MSRP **\$32.00** (A)



Anti-Curl Collar with Collar Stays (M's)
Helps maintain collar shape and structure, even after washing

Classic 3-Button Placket (M's)
Classic polo styling that is easy to wear and easy to style

STORMTECH H2X-DRY® Moisture Management
Allows perspiration to escape from the body, helping to maintain optimal body temperature and comfort

Mechanical Stretch
Provides added comfort, flexibility and shape retention

Hem Side Slits
Adds fashion detail, comfort and ease of movement at hem

Anti-Curl Combination Collar with Collar Stays (W's)
Helps maintain collar shape and structure, even after washing

Open-V 2-Button Placket (W's)
Provides modern, premium styling, flexibility, and comfort

Contoured Seaming (W's)
Provides a closer to body fit and sleek silhouette

Snag Resistant Fabric
Improves the snag resistance of the fabric and leaves the garment looking new, wear after wear

UPF Rating 40+
Protects the skin from the sun's rays



ANTI-SNAG

Fabrication 100% Polyester Double Pique
Weight Lightweight - 4.28 oz/yd² / 145gsm

Men's Sizes S-3XL (Black, Granite, Navy S-5XL)

Women's Sizes XS-2XL (Black, Granite, Navy XS-3XL)

Technical Features



Decoration Options



M's & W's: Black

M's & W's: Granite

M's & W's: Navy

M's & W's: Royal Blue

M's & W's: Caroline Blue

M's & W's: Evergreen

M's & W's: Red

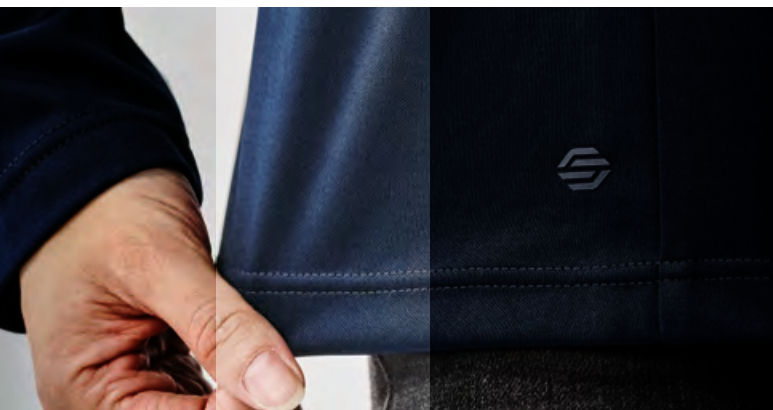
M's & W's: Steel Grey

M's & W's: White

Monterey 1/4 Zip Pullover

FPL-5M | FPL-5W

The Monterey 1/4 Zip Pullover is designed for optimal performance, featuring H2X-DRY® fabric that wicks moisture away from the skin to help regulate body temperature during high-exertion activities. This pullover equipped with a semi-auto locking zipper, offers both comfort and flexibility as the perfect base layer for a multi-layer system. With a UPF Rating of 40+, it provides excellent protection from the sun's harmful rays, making it an essential piece for outdoor activities.



Monterey 1/4 Zip Pullover

FPL-5M | FPL-5W

MSRP **\$45.00** (A)



1/4 Zip with Double Welt
Adjust to shut out the cold or allow heat to escape

STORMTECH H2X-DRY® Moisture Management
Allows perspiration to escape from the body, helping to maintain optimal body temperature and comfort

Mechanical Stretch
Provides added comfort, flexibility and shape retention

Self-Fabric Knit Cuff (M's)
Provides enhanced durability and comfort



Semi-Auto Locking Zipper
Engineered to lock in position during activity

Contoured Seaming (W's)
Provides a closer to body fit and sleek silhouette

Snag Resistant Fabric
Improves the snag resistance of the fabric and leaves the garment looking new, wear after wear

UPF Rating 40+
Protects the skin from the sun's rays



ANTI-SNAG

Fabrication 100% Polyester Double Pique, 4.28 oz/yd² / 145gsm

Men's Sizes S-3XL (Black, Navy, Granite S-5XL)

Women's Sizes XS-2XL (Black, Navy, Granite XS-3XL)

Technical Features



Decoration Options



M's & W's: Black



M's & W's: Granite



M's & W's: Navy



M's & W's: Steel Grey



Stockton Fleece Pullover Hoody

FPL-7M | FPL-7W

The Stockton Fleece Pullover Hoody is a basic layering favorite. Kangapockets and a drawcord adjustable hood provides practical protection from wind and crisp weather conditions. The rib knit construction at the hem and cuffs delivers enhanced durability while providing comfort effortlessly. Made from Certified Cotton for superior softness with GRS-Certified Recycled Polyester fleece to help maintain shape. UPF rating of 50+ protects the skin from the sun's rays.



Stockton Fleece Pullover Hoody

FPL-7M | FPL-7W

MSRP **\$80.00** (A)



3-Piece Cross-Over Hood with Adjustable Drawcord
Adjust the fit of the hood for maximum warmth in cool weather

UPF Rating 50+
Protects the skin from the sun's rays

Kanga Pockets (M's)
For casual comfort and keeping your hands warm

1x1 Rib Knit Cuffs and Hem
Rib knit construction provides enhanced durability and comfort

Double Needle Topstitching
Reinforced seam stitching for long-lasting durability

Set-in Sleeves
Provide optimal range of motion and a more fitted silhouette at the shoulder

On-Seam Hand Warmer Pockets (W's)
For casual comfort and keeping your hands warm



Fabrication 60% Cotton/40% Polyester Terry Fleece

Weight Mid-Weight – 7.08 oz/yd² / 240gsm

Technical Features

Men's Sizes S-3XL (Black, Granite, Navy S-5XL)

Women's Sizes XS-2XL (Black, Granite, Navy XS-3XL)

Decoration Options



M's & W's: Black



M's & W's: Granite



M's & W's: Navy



M's & W's: Retro Blue

Stockton Fleece Crew Neck

FPL-6M | FPL-6W

The efficient simplicity of the Stockton Fleece Crew Neck makes it a versatile style contender at work or play. Featuring hardwearing, cotton-rich performance fleece, the Stockton Fleece Crew allows for easy movement, and maintains a smooth silhouette in any position. An ideal solution for everyday wear, the ribbed hem band and cuffs provide ultimate comfort and durability.



Stockton Fleece Crew Neck

FPL-6M | FPL-6W

MSRP **\$60.00** (A)



1x1 Rib Knit Crew Neck
Rib knit construction provides enhanced durability and comfort at the neck opening

Double Needle Topstitching
Reinforced seam stitching for long-lasting durability

UPF Rating 50+
Protects the skin from the sun's rays

Set-in Sleeves
Provide optimal range of motion and a more fitted silhouette at the shoulder

1x1 Rib Knit Cuffs and Hem
Rib knit construction provides enhanced durability and comfort



Fabrication 60% Cotton/40% Polyester Terry Fleece

Men's Sizes S-3XL (Black, Granite, Navy S-5XL)

Weight Mid-Weight – 7.08 oz/yd² / 240gsm

Women's Sizes XS-2XL (Black, Granite, Navy XS-3XL)

Technical Features

Decoration Options



M's & W's: Black



M's & W's: Granite



M's & W's: Navy



M's & W's: Retro Blue



Stockton L/S Tee

TLX-6M | TLX-6W

The Stockton Long Sleeve Tee was built to feel like your favorite cotton tee but with built-in resilience. Using 60% Certified Cotton gives us the softness and natural hand feel we love, while blending in 40% Polyester ensures your favorite tee keeps its shape and performs better over time. The rib knit collar and taped neck seam were chosen for durability and comfort — details that make a big difference in how a tee holds up after repeated wear and wash. With UPF 50+ protection built in, the Stockton Tee is designed not just for softness but for everyday reliability in all conditions.



Stockton L/S Tee

TLX-6M | TLX-6W

MSRP **\$30.00** (A)



1x1 Rib Knit Crew Neck and Cuffs
Rib knit construction provides enhanced durability and comfort at the neck opening

Taped Neck Seam
For long-lasting shape retention

UPF Rating 50+
Protects the skin from the sun's rays



Fabrication 60% Cotton/40% Polyester Single Jersey

Weight Lightweight – 4.42 oz/yd² / 150gsm

Technical Features

Men's Sizes S-3XL (Black, Navy S-5XL)

Women's Sizes XS-2XL (Black, Navy XS-3XL)

Decoration Options



M's & W's: Black



M's & W's: Granite



M's & W's: Navy

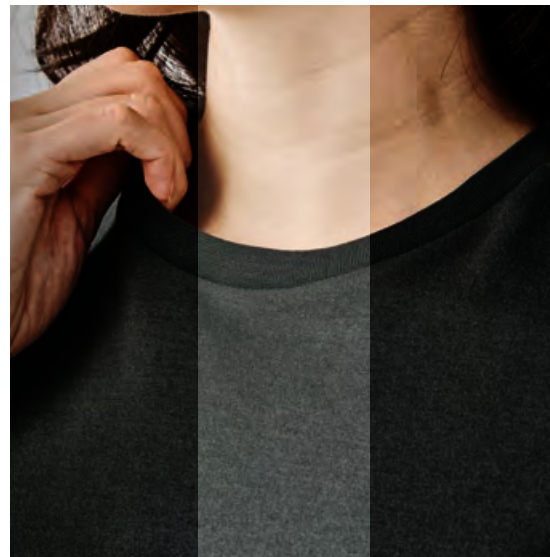


M's & W's: White

Stockton S/S Tee

TSX-6M | TSX-6W

The Stockton Short Sleeve Tee was built to feel like your favorite cotton tee but with built-in resilience. Using 60% Certified Cotton gives us the softness and natural hand feel we love, while blending in 40% Polyester ensures your favorite tee keeps its shape and performs better over time. The rib knit collar and taped neck seam were chosen for durability and comfort — details that make a big difference in how a tee holds up after repeated wear and wash. With UPF 50+ protection built in, the Stockton Tee is designed not just for softness but for everyday reliability in all conditions.



Stockton S/S Tee

TSX-6M | TSX-6W

MSRP **\$22.00** (A)



1x1 Rib Knit Crew Neck

Rib knit construction provides enhanced durability and comfort at the neck opening

Taped Neck Seam

For long-lasting shape retention



UPF Rating 50+

Protects the skin from the sun's rays



RESPONSIBLY PRODUCED COTTON

Fabrication 60% Cotton/40% Polyester Single Jersey

Weight Lightweight – 4.42 oz/yd² / 150gsm

Technical Features



Men's Sizes S-3XL (Black, Navy S-5XL)

Women's Sizes XS-2XL (Black, Navy XS-3XL)

Decoration Options



M's & W's: Black



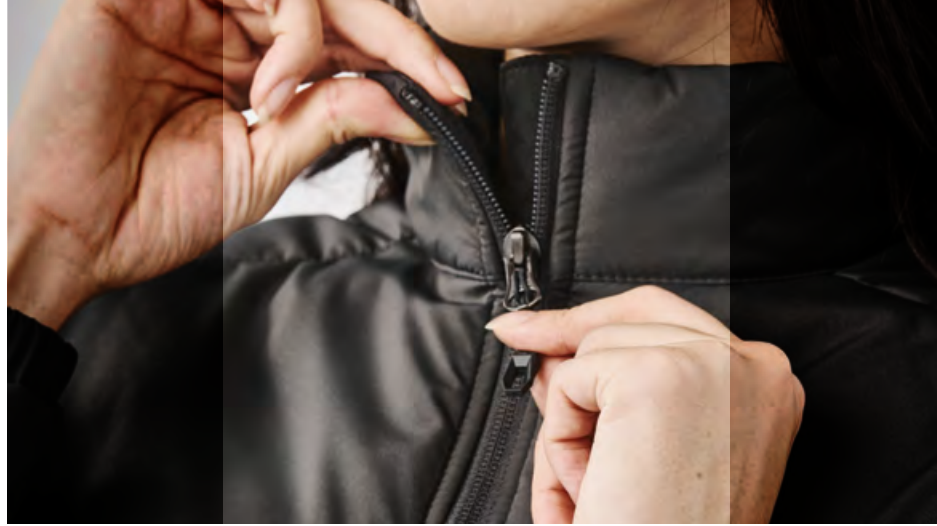
M's & W's: Granite



M's & W's: Navy



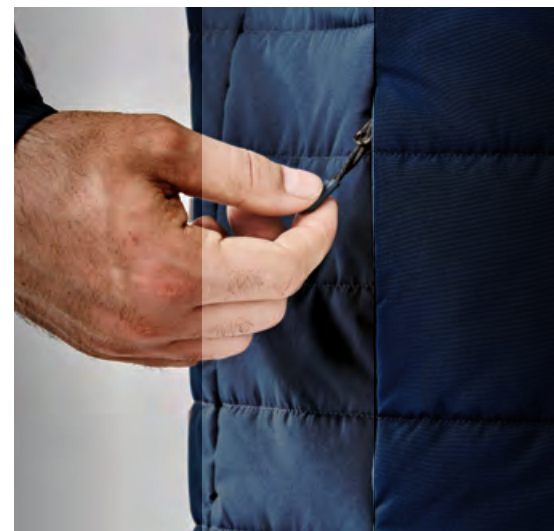
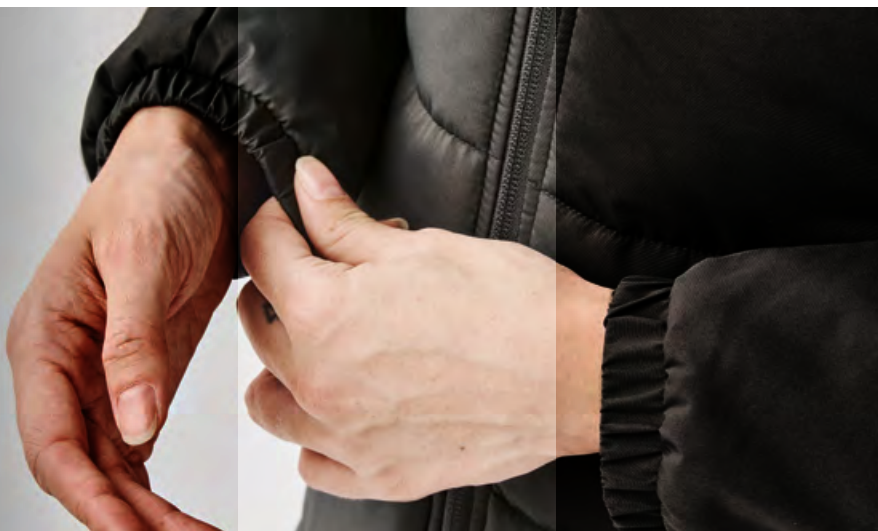
M's & W's: White



Sierra Thermal Jacket

TRX-5M | TRX-5W

Lightweight thermal efficiency. Engineered for high with reduced weight, the Sierra Thermal Jacket is the essential layering solution for any outdoor adventure. Featuring Stormtech Thermal Shell™ insulation and a DWR water-repellent finish to keep you warm and dry while mild wet weather. The full-length internal stormflap adds extra protection against the elements, while the quilted design ensures optimal heat retention without the bulk. Built with feather-free insulation, this jacket provides sustainable warmth, and the elasticized cuffs help lock in heat, ensuring you're ready for anything, no matter the weather.



Sierra Thermal Jacket

TRX-5M | TRX-5W

MSRP **\$95.00** (A)

Internal Full-Length Stormflap
A second layer of protection from cold drafts and wet weather

STORMTECH Thermal Shell™ Insulation
High loft synthetic insulation, designed to be lightweight, compressible, and provide maximum warmth

Water Repellent Finish
Delivers effective water resistance in all weather conditions

Adjustable Hem
Cuts out the chill and maximizes core warmth



High-Performance Windproof Outer Shell
100% windproof outer shell fabric helps maintain thermal performance by keeping the heat in and the wind out

Zippered Hand Warmer Pockets
Keeps contents secure and your hands warm and dry

Elasticized Cuffs
Block cold air from entering the sleeve and offers a secure fit



Additional Features • Decoration Access

Fabrication (Shell) 100% Polyester Pongee, 2.65 oz/yd² / 90gsm
(Lining) 100% Polyester

Technical Features **THERMALSHELL INSULATION**



Men's Sizes S-5XL

Women's Sizes XS-3XL

Decoration Options



M's & W's: Black



M's & W's: Granite



M's & W's: Navy

Sierra Thermal Vest

TVX-5M | TVX-5W

Lightweight thermal efficiency. Engineered for high performance with reduced weight, the Sierra Thermal Vest offers lightweight warmth and windproof protection. Featuring Stormtech Thermal Shell™ insulation and a DWR water-repellent finish, this vest keeps you warm and dry while shielding you from the wind. The Thermal Shell™ Insulation ensures optimal core warmth, and the windproof outer shell adds an extra layer of protection against the elements. Perfect for layering, this vest is your go-to piece for warmth and performance in cold, unpredictable weather.



Sierra Thermal Vest

TVX-5M | TVX-5W

MSRP **\$80.00** (A)

Internal Full-Length Stormflap
A second layer of protection from cold drafts and wet weather

STORMTECH Thermal Shell™ Insulation
High loft synthetic insulation, designed to be lightweight, compressible, and provide maximum warmth

Water Repellent Finish
Delivers effective water resistance in all weather conditions

High-Performance Windproof Outer Shell
100% windproof outer shell fabric helps maintain thermal performance by keeping the heat in and the wind out

Zippered Hand Warmer Pockets
Keeps contents secure and your hands warm and dry

Adjustable Hem
Cuts out the chill and maximizes core warmth



Additional Features • Decoration Access

Fabrication (Shell) 100% Polyester Pongee, 2.65 oz/yd² / 90gsm
(Lining) 100% Polyester

Technical Features **THERMAL SHELL INSULATION**



Men's Sizes S-5XL

Women's Sizes XS-3XL

Decoration Options



M's & W's: Black



M's & W's: Granite



M's & W's: Navy



Sierra Lightweight Shell

SXJ-2M | SXJ-2W

This packable lightweight shell is built to keep you at your best in breezy weather. A water-resistant outer shell provides reliable protection in mild wet weather, while the sleek design ensures maximum mobility and perfect fit. When not in use, it easily packs into its own pocket for convenient storage. This jacket is a perfect solution for mild weather conditions.



Sierra Lightweight Shell

SXJ-2M | SXJ-2W

MSRP **\$40.00** (A)

Water Repellent Finish
Delivers effective water resistance in all weather conditions

High-Performance Windproof Outer Shell
100% windproof outer shell fabric helps maintain thermal performance by keeping the heat in and the wind out

Front Hand Pockets
Keeps hands warm and essentials within reach

Packable Into Pocket
Makes it easy to pack and carry on the go

Single Hand Hem Adjustment
Single hand adjustment for ease of use

Partial Elasticized Cuffs
Blocks cold air from entering sleeve and offers a relaxed fit



Fabrication 100% Polyester Pongee, 2.65 oz/yd² / 90gsm

Men's Sizes S-3XL (Black, Granite, Navy S-5XL)

Women's Sizes XS-2XL (Black, Granite, Navy XS-3XL)

Technical Features



Decoration Options



M's & W's: Black



M's & W's: Granite



M's & W's: Navy



M's & W's: Royal Blue

Sierra Lightweight Vest

SVX-2M | SVX-2W

This packable lightweight vest is built to keep you at your best in mild weather. A water-resistant outer shell provides reliable protection in mild wet weather, while the sleek design ensures maximum mobility and perfect fit. When not in use, it easily packs into its own pocket for convenient storage. This jacket is a perfect solution for mild weather conditions.



Sierra Lightweight Vest

SVX-2M | SVX-2W

MSRP **\$35.00** (A)

Water Repellent Finish
Delivers effective water resistance in all weather conditions

High-Performance Windproof Outer Shell
100% windproof outer shell fabric helps maintain thermal performance by keeping the heat in and the wind out

Front Hand Pockets
Keeps hands warm and essentials within reach

Packable Into Pocket
Makes it easy to pack and carry on the go

Single Hand Hem Adjustment
Single hand adjustment for ease of use



Fabrication 100% Polyester Pongee, 2.65 oz/yd² / 90gsm

Men's Sizes S-5XL

Women's Sizes XS-3XL

Technical Features



Decoration Options



M's & W's: Black



M's & W's: Granite



M's & W's: Navy

Tundra Quilted Shacket

TRX-6M | TRX-6W

Cool-weather casual. The Tundra Quilted Shacket features low-profile thermal fill panels, snap closure and a water repellent finish fabric designed to keep you warm and dry. Both Men's and Women's styles feature a classic tailored collar with single welt hand pockets to keep contents secure and your hands warm and dry. The Tundra Quilted Shacket is built with hard-wearing GRS-Certified Recycled Nylon fabric.



Tundra Quilted Shacket

TRX-6M | TRX-6W

MSRP **\$150.00** (A)

STORMTECH Thermal Shell™ Insulation
High loft synthetic insulation, designed to be lightweight, compressible, and provide maximum warmth

Durable and Hard-Wearing
Center Front Snap Closure Easy to wear casually or to work

Single Welt Hand Pockets
Keeps contents secure and your hands warm and dry

Ogee Quilted Polyfill (W's)
Easy to wear casually or to work

Over-Sized Curved Hem (W's)
Designed to provide a more flexible fit with added coverage and warmth

High-Performance Windproof Outer Shell
100% windproof outer shell fabric helps maintain thermal performance by keeping the heat in and the wind out

Single Chest Pocket with Flap (M's)
Allows you to quickly and conveniently stow and access personal items

Durable Water Repellent Finish
Prevents wet weather from saturating the outer shell fabric

Diamond Quilted Polyfill (M's)
Diamond construction designed to secure polyfill in place while staying on trend

Cuff Plackets with Snap Closure (M's)
Provide an adjustable and comfortable fit at the wrist



Additional Features

- Internal Chest Pocket
- Decoration Access

Fabrication (Shell) 100% Recycled Nylon Ripstop, 1.03 oz/yd² / 35gsm (Lining) 100% Recycled Nylon

Men's Sizes S-3XL (Black, Granite, Midnight S-5XL)

Women's Sizes XS-2XL (Black, Granite, Midnight XS-3XL)

Technical Features

THERMAL SHELL INSULATION



Decoration Options



M's & W's: Black



M's & W's: Granite



M's & W's: Midnight

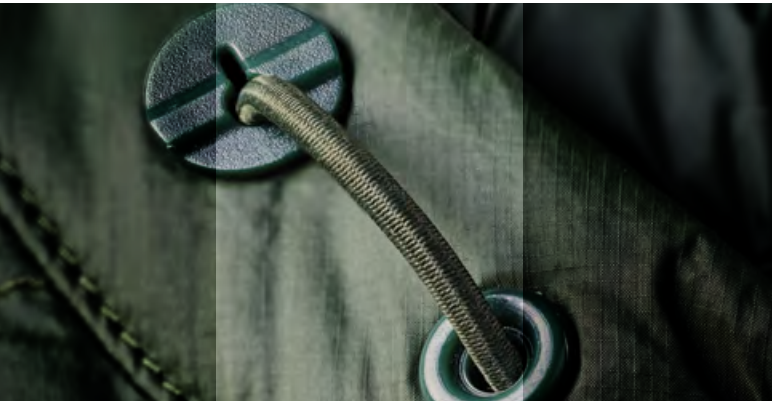


M's & W's: Cypress

Tundra Thermal Jacket

TNO-1M | TNO-1W

The Tundra Thermal Jacket offers lightweight warmth and reliable protection in cold conditions. Built with a high-efficiency Thermolex™ quilted body and a 100% windproof, water-repellent outer shell, it delivers insulation without adding bulk. Articulated shoulders and elbows provide an ergonomic fit for enhanced mobility, while the scuba hood and adjustable hem with drawcord ensure customizable coverage. Made from 100% GRS-Certified Nylon, this lightweight thermal shell combines sustainable durability with technical performance.



Tundra Thermal Jacket

TNO-1M | TNO-1W

MSRP **\$180.00** (A)

STORMTECH Thermolex™ High Loft Synthetic Down
Highly efficient and compressible feather-free synthetic down engineered to provide superior warmth and comfort in cold weather conditions

Free Durable Water Repellent Finish
Delivers effective water resistance in all weather conditions

Zippered On-Seam Hand Warmer Pockets
Keeps contents secure and your hands warm and dry

Adjustable Hem with Drawcord
Provides a comfortable fit at the waist and helps keep you warm

Adjustable Full Coverage Hood
For maximum warmth in cool weather

Articulated Action
Shoulders and Elbows Ergonomic design that enhances a free range of movement

High-Performance Windproof Outer Shell
100% windproof outer shell fabric helps maintain thermal performance by keeping the heat in and the wind out

Elasticized Cuff Opening
Blocks cold air from entering the sleeves



WINDPROOF



+5°C TO -10°C
41°F TO 14°F



RECYCLED CONTENT

Additional Features

- Contoured Shaped Hem (W's)
- Contoured Silhouette (W's)
- Internal Stash Pockets

Technical Features



Fabrication

(Shell) 100% Recycled Nylon Ripstop, 1.03 oz/yd² / 35gsm
(Lining) 100% Recycled Nylon

Men's Sizes

S-3XL (Black, Granite S-5XL)

Women's Sizes

XS-2XL (Black, Granite, S-3XL)

Decoration Options



M's & W's: Black



M's & W's: Granite



M's & W's: Midnight



M's & W's: Cypress



Aquarius Backpack

BPX-8

Practical functionality expressed through simple, adaptable design. The Aquarius Backpack places emphasis on smart simplicity with hidden features and a spacious main compartment for larger essentials. A padded laptop sleeve keeps your device protected from daily bumps and scratches, while its clean, urban design ensures effortless style on the go. A dynamic solution for digital age demands.



Aquarius Backpack

BPX-8

MSRP **\$70.00** (A)

Heavy Duty Carry Handle

Convenient carrying when you need to grab and go

Breathable Air-Flow Padded Back Panel

Keeps you cool and comfortable with breathable airflow

Rolling Luggage Compatible

Easily fits over luggage handles for effortless travel through streets and airports

Adjustable Sternum Strap

Adjust to suit both your supreme comfort and performance

Large Zippered Main Opening
Allows adequate space for a variety of contents

Fits Up to 16" Laptop
Padded protection for full size laptops

Ergonomic Adjustable Shoulder Straps
Provides a comfortable and customizable fit for extended wear

Large Side Mesh Pockets
Keeps water bottles, snacks, and smaller items visible and easy to reach



Black



16" MAXIMUM
DEVICE SIZE



ROLLING
LUGGAGE
COMPATIBILITY



DUAL CARRY
HANDLES



RECYCLED
CONTENT

Additional Features

- Suspended Laptop Sleeve
- External Storage Zippered Compartments
- Internal Key Clip
- Document Stash Pocket

Fabrication

(Shell) 100% Recycled Polyester Oxford 930D PU coated;
(Shell-Secondary) 100% Polyester 600D PU coated

Sizing

19" H x 12" W x 6" D

Volume

25 Liters / 1,368 Cubic Inch

Decoration Options



Aquarius Computer Pack

BPX-9

The Aquarius Computer Pack is designed for effortless organization and reliable protection for your laptop and other valuables. It features ergonomic, adjustable shoulder and sternum straps, along with a padded airflow back panel to keep you cool and comfortable. Keeping functionality at the forefront without complicating the design. Dual side mesh pockets provide easy access to hydration on the go.



Aquarius Computer Pack

BPX-9

MSRP **\$75.00** (A)



Heavy Duty Carry Handle
Convenient carrying when you need to grab and go

Ergonomic Adjustable Shoulder Straps
Provides a comfortable and customizable fit for extended wear

Fits Up to 15" Laptop
Padded protection for full size laptops

Breathable Air-Flow Padded Back Panel
Keeps you cool and comfortable with breathable airflow

Separate Laptop Compartment with Suspended Sleeve
Protects your laptop against hard impacts and surfaces

Rolling Luggage Compatible
Easily fits over luggage handles for effortless travel through streets and airports

Front Organization Pocket
Provides useful storage and easy access to personal items

Side Mesh Pockets
Keeps water bottles, snacks, and smaller items visible and easy to reach

100% Waterproof Fabric Bottom Panel
Keeps contents protected on wet surfaces

Black



15" MAXIMUM DEVICE SIZE



ROLLING LUGGAGE COMPATIBILITY



DUAL CARRY HANDLES



RECYCLED CONTENT

Additional Features

- Adjustable Sternum Strap
- Internal Organization System
- Document Stash Pocket

Fabrication

(Shell) 100% Recycled Polyester Oxford 930D PU coated;
(Shell-Secondary) 100% Polyester 600D PVC coated

Sizing

17" H x 12" W x 6" D

Volume

20 Liters / 1,224 Cubic Inch

Decoration Options



Aquarius 24 Cooler Backpack

BCL-1

The Aquarius 24 Cooler Backpack combines urban style with unbeatable practicality. Featuring a classic design, this durable cooler backpack offers an easy-to-clean, food-safe interior. The spacious main compartment fits your favorite drinks, while the front pocket is perfect for your personal accessories. Adjust the ergonomic shoulder straps for a perfect fit and enjoy the comfort of the padded back panel as you head out on your next spontaneous adventure. Whether you're commuting or exploring, this backpack is designed to keep up with your active lifestyle.



Aquarius 24 Cooler Backpack

BCL-1

MSRP **\$80.00** (A)



24 Can Capacity
Extra large capacity for multiple applications

Heavy Duty Carry Handle
Convenient carrying when you need to grab and go

Large Zippered Main Opening
Allows adequate space for a variety of contents

Ergonomic Adjustable Shoulder Straps
Provides a comfortable and customizable fit for extended wear

3 External Storage Zippered Compartments
Ensures your contents are organized, safe, secure and easy to reach

Large Side Mesh Pockets with Gear Loop
Keeps water bottles, snacks, and smaller items visible and easy to reach

Padded Back Panel
Helps keep back and shoulders feeling comfortable

Easy Clean Food Safe Lining
An easy to clean and safe storage for your food and beverages

Black



Fabrication (Shell) 100% Recycled Polyester
Oxford 930D PU coated
(Shell-Secondary) 100% Polyester 600D PU coated

Sizing 19" H x 10" W x 7.5" D
Volume 23 Liters/1,425 Cubic Inches (24 Cans)

Decoration Options **E** **HT** **LP**



ICE-2
MSRP \$4.00

Aquarius 16 Cooler Backpack

BCL-2

The weather-proof Aquarius 16 Cooler Bag is your go-anywhere companion, blending urban style with outdoor functionality. With plenty of space to keep your drinks icy cold, this sleek cooler bag features a removable adjustable shoulder strap for a customizable fit and an easy-to-clean food-safe interior. Its generous storage compartments keep your valuables safe, while the mesh back pockets are perfect for stashing keys, accessories, or that extra snack. Whether you're strolling through the city or heading out for a spontaneous adventure, the Aquarius 16 Cooler Bag is designed to keep your essentials chilled and your hands free.



Aquarius 16 Cooler Backpack

BCL-2

MSRP **\$50.00** (A)

Additional Features

- Use with Stormtech Ice Pack

Fabrication

(Shell) 100% Recycled Polyester
Oxford 930D PU coated
(Shell-Secondary) 100% Polyester 600D PU coated

Sizing

12" H x 11.5" W x 7.5" D

Volume

17 Liters/1,037 Cubic Inches (16 Cans)

Decoration Options



EASY-CLEAN
FOOD SAFE
LINING



RECYCLED
CONTENT

Front Organization Pocket
Provides useful storage and easy access to personal items

Removable Adjustable Shoulder Strap
Provides a comfortable and adjustable fit for easy carrying



ICE-2
MSRP \$4.00

Padded Carry Handle
Convenient carrying when you need to grab and go

16 Can Capacity
Compact and easy to handle for multiple applications

Back Mesh Pocket
Extra storage to keep snacks and smaller items visible and easy to reach

Easy Clean Food Safe Lining
An easy to clean and safe storage for your food and beverages



Black

Aquarius 12 Cooler Backpack

BCL-3

MSRP **\$30.00** (A)

Additional Features

- Use with Stormtech Ice Pack

Fabrication

(Shell) 100% Recycled Polyester
Oxford 930D PU coated
(Shell-Secondary) 100% Polyester 600D PU coated

Sizing

8.5" H x 10" W x 6.5" D

Volume

9 Liters/552 Cubic Inches (12 Cans)

Decoration Options



EASY-CLEAN
FOOD SAFE
LINING



RECYCLED
CONTENT

12 Can Capacity
Compact and easy to handle for multiple applications

Easy Clean Food Safe Lining
An easy to clean and safe storage for your food and beverages



ICE-2
MSRP \$4.00

Padded Carry Handle
Convenient carrying when you need to grab and go

Back Mesh Pocket
Extra storage to keep snacks and smaller items visible and easy to reach



Black

Nomad Toiletry Bag

APM-3

The Nomad Toiletry Bag is crafted from reinforced 100% waterproof fabric and heavy-duty nylon webbing. A miniature version of Nomad gear bag features dual side carry handles make it easy to adapt to any journey. Lightweight and highly functional, it's a tough, travel-ready essential designed to perform wherever the road leads.



Nomad Toiletry Bag

APM-3

MSRP **\$25.00** (A)



Internal Hook
Allows you hang the bag to stay organized

D-Shape Zippered Lid
Keeps contents organized and accessible

External Gear Loops
Allows you to secure extra items outside the bag for quick access

Dual Side Carry Handles
Conveniently choose either side carry handle when you need to grab and go

Wipe Clean Interior Fabrication
Keeps interior easy to clean and maintain



WATERPROOF FABRIC

Additional Features

- Internal Mesh Pocket

Fabrication

(Shell) 100% Polyurethane;
(Shell - Secondary) 100% Nylon PVC coated;
(Lining) 100% Polyester

Sizing

4" H x 4" W x 8" D

Volume

2.5 Liters / 128 Cubic Inch

Decoration Options





STORMTECH®

stormtechperformance.com
1-866-407-2222 | info@stormtech.ca